

13,864

Individuals
Impacted
Worldwide

Contents

Welcome

Welcome to the 2023-24 Annual Report for Attack Poverty! As we reflect on another year of growth, impact, and transformation, we are filled with gratitude for the incredible support of our donors, volunteers, partners, and the communities we serve. This report highlights the milestones we've achieved in our mission to break the cycle of generational poverty and empower individuals to thrive. From expanding our programs to deepening our relationships with local leaders, every step forward has been made possible by your dedication and belief in Attack Poverty to cultivate. As you explore the stories, financials, and overall impact in this report, we hope you feel as inspired as we are by the positive transformation we are collectively creating. Thank you for being an essential part of our journey.

- 3** //CEO MESSAGE
- 4** //BOARD CHAIR MESSAGE
- 5** //ABOUT US
- 6** //KEY TERMS
- 7** //THE ROAD TO FLOURISHMENT
- 8** //STORIES OF IMPACT
- 9** //SPIRITUAL GROWTH
- 10** //EDUCATION
- 12** //REVITALIZATION
- 13** //BASIC NEEDS
- 14** //INTERNATIONAL PARTNERS
- 16** //STORIES OF IMPACT
- 17** //GALA
- 18** //MISSION WEEK
- 20** //SERVE DAYS
- 22** //VOLUNTEERS
- 23** //FINANCIALS

A Word From Our CEO

Hello, I'm Marguerite Williams, and I am deeply grateful to God for the opportunity to serve as the new CEO of Attack Poverty. It is with great excitement and humility that I step into this role, and I am honored to join such a dedicated team and work alongside our incredible community partners. Together, we are united in a mission that has the power to transform lives and uplift neighborhoods.

Attack Poverty's mission resonates deeply with my own calling—to empower individuals and create lasting, sustainable change in communities. I believe there is no greater reward than helping people connect to the resources and opportunities that will enable them to fulfill their God-given potential.

As we move forward in this work, I invite you to join us on this incredible journey. Together, let's continue to serve with God's love, creating pathways for our neighbors to rise above poverty and flourish, by His grace. Thank you for being a part of this vital mission, and for your ongoing support of Attack Poverty.

Marguerite Williams

CEO ATTACK POVERTY



A Word From Our Board Chair

I want to extend my heartfelt thanks to each of you for your unwavering support this year. So many of you committed to praying for our work, continued volunteering, and provided vital financial contributions. Your generosity gave us the fuel to stay in the fight, enabling us to continue our programs and make a tangible impact on the lives of so many individuals.

The next exciting season of Attack Poverty has already begun under Marguerite's leadership. I can't wait to work side by side with each of you as we see real life transformation in the communities we serve.

Thank you again for your prayers and support. We look forward to a bright future!

Nick Vann
BOARD CHAIR



About Us



Our vision is to empower people to attack poverty in their life and community by strengthening under-resourced communities through SPIRITUAL GROWTH, EDUCATION, REVITALIZATION, AND BASIC NEEDS.

At Attack Poverty, we design and implement our programs to provide community members the opportunity to flourish.

Through listening and relationship building we can continuously improve our programs to meet the needs of the community, but most importantly increase one's resiliency and capacity to overcome barriers on their own.

Generational poverty is not something that happens all at once. It occurs over time and is the product of many factors. At the root of poverty is broken relationships, broken relationships between humanity, between humanity and God's creation and ultimately between humanity and God.

CORE VALUES OF ATTACK POVERTY



FAITH IN ACTION

We work with local churches to model what can happen when people work together for the common good. We are a global organization that serves locally.



INTEGRITY

We will honor our word as we work with and serve others. We are committed to transparency as we steward the God-given resources entrusted to us.



EMPOWERMENT

We work to awaken the capacity of individuals or groups to make choices and transform those choices into desired actions and outcomes. It is about development, not charity. It's a hand up, not hand out.



COLLABORATIVE PARTNERSHIP

We can't do this alone; we get excited about partnering with other non-profit organizations, churches, corporations, community leaders, stakeholders, residents, and local government working together towards a healthier, sustainable community.



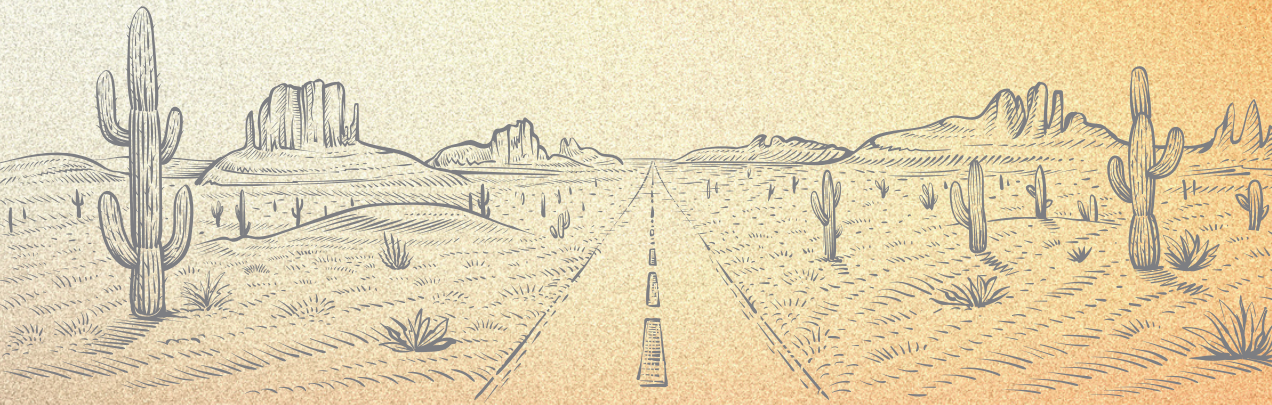
HOLISTIC APPROACH

We work with all sectors of the community to restore broken systems and develop platforms for voices to be heard, individuals empowered, and communities made whole.

Key Terms

Human Flourishment

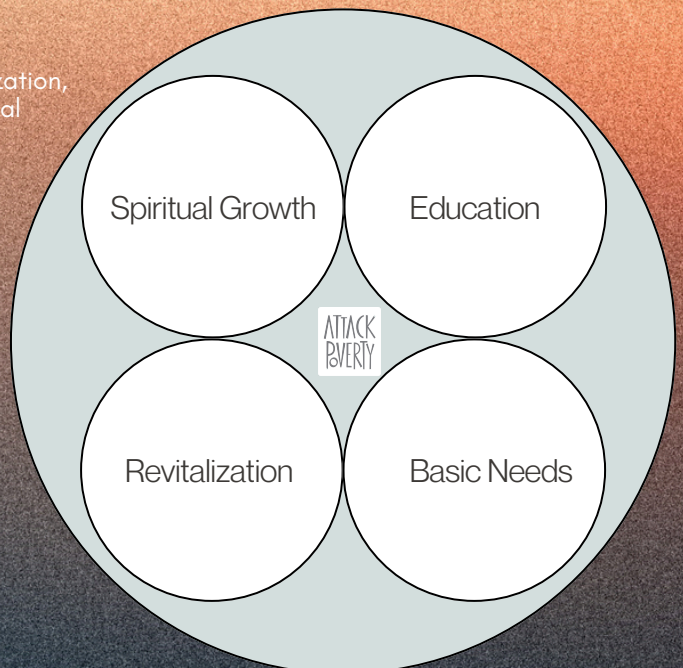
The journey one chooses to reach their God ordained potential. The intersection of relationships, passions, gifts, and contribution to God's kingdom.



Missional Components

Spiritual Growth, Education, Revitalization, and Basic Needs are the four missional components that anchor every programmatic initiative.

“What is unique about Attack Poverty is the holistic approach we take to breaking the cycle of generational poverty, aligning everything we do with our four missional components is the backbone to making that a reality.”



Jenny Jones
Senior Director of Programs

The Road to Flourishment

A Story About Brandi

In April 2024, Brandi, a mother of two, walked into Attack Poverty Headquarters looking for rental assistance. She needed \$1,300 to avoid eviction. We were able to use an Emergency Fund to help cover this cost for Brandi, who was brought to tears and said, "this is just what I needed to know that God truly does care about us." Over the next several days, Brandi's language shifted. She began trusting God to provide for her and her two children which prepared her for the next hardship. The next week, Brandi's car was repossessed and we weren't immediately able to help her. We worked together to find the funds and she was able to get her car back. Through these valleys, Brandi kept praying and God provided everything she needed in His perfect timing.

Brandi has now moved into her new home through a partnership with a local organization who provides housing to single mothers to help them move towards self-sufficiency and independence. She is a great example of how we want to walk alongside community members and work collaboratively with other organizations to provide the resources for them to thrive. Brandi's home is intentionally the closest home next to one of our locations where she will have access to programs and a computer lab for her children.

Over the last few months, we have empowered Brandi to set S.M.A.R.T. goals in which she can grow her capacity and become more resilient. Brandi now has two jobs in her field of hypnotherapy. Everything is starting to come together and you can see a shift in the road to stability and flourishing.

This year we walked alongside seventeen individuals on their road to flourishing.

Individuals on The Road to Flourishment

17

Stories of Impact from Our Community

“A NEW COMMAND I
GIVE YOU: LOVE ONE
ANOTHER. AS I HAVE
LOVED YOU, SO YOU
MUST LOVE
ONE ANOTHER.”
JOHN 13:34

Danna

At You Can Academy, the focus on character development and empowering students to become leaders and serve others is a cornerstone of our program. Danna, a fifth-grade student, exemplified this by expressing her desire to become the first Safety Patrol member in her class and serve as a role model for her peers. She sought assistance from our volunteers to complete an essay for her school application, demonstrating her commitment to this goal. We were thrilled when Danna shared the news that she was selected.

“GREATER LOVE HAS
NO ONE THAN THIS:
TO LAY DOWN ONE’S
LIFE FOR ONE’S
FRIENDS.”
JOHN 15:13

Alfred

In the heart of North Richmond, a transformation led by Attack Poverty's Disaster Recovery team and dedicated volunteers breathed new life into Alfred's home. Struggling with his wife's health issues and a fixed income, Alfred's situation worsened when a January freeze caused pipes to burst, flooding his home. Volunteers from Sanctuary Fellowship and Pecan Grove Baptist Church rallied to help, clearing debris, power-washing the house, and painting both the exterior and an interior room. Over the next few days, they revitalized the front yard, began installing new flooring, and even added siding to a backyard shed. Alfred watched in gratitude as his home, once burdened by misfortune, was transformed into a place of hope and renewal—illustrating the power of community and collective action.

Adella

When Adella first came to You Can Academy last year, she was very shy and a bit guarded. Over time, we got to know her and watched her blossom into a bubbly and cheerful young girl. We focused on building her confidence and frequently showed her that she was capable of much more than she had imagined. Her hard work paid off when she approached us with a request to give a presentation in front of the class. With her mom being deaf, Adella had learned quite a bit of American Sign Language and wanted to share this with her peers. We collaborated on a plan for a few key words, which blossomed into a 15-minute presentation. This experience not only educated her classmates about living with hearing impairment, but also transformed the shy girl who once hesitated to join others into someone confidently standing before them, laughing and sharing her knowledge as if she had always been meant to do it.

Spiritual Growth

At Attack Poverty, we believe that lasting community transformation begins with spiritual growth. When individuals experience spiritual renewal, they are empowered to build stronger, more resilient communities. By nurturing faith and personal development, we create a foundation for sustainable change that reaches far beyond immediate needs.

We long to see communities where those poor and marginalized are **HEARD, EMPOWERED, and MADE WHOLE.**

We empower individuals to put their faith into action to **PROVOKE TRANSFORMATION** to see God's kingdom come to life. When an individual's dignity is restored in God, flourishing begins to take place.



We encourage continued spiritual growth through:



Bible studies & small groups



Empowering & resourcing the local church



Prayer walking



Relationship building

Therefore, if anyone is in Christ, the new creation has come: The old has gone, the new is here!

2 CORINTHIANS 5:17

Youth Education

You Can Academy is a quality after-school program that provides homework help, character development, enrichment activities, healthy snacks, and mentoring in a safe environment. With 92 students enrolled this year and 88 completing the program, it continues to empower students through education.

An average class size of 17 and a 4:1 student-to-volunteer ratio ensure personalized attention, contributing to an 82% attendance rate across 79 sessions. By offering consistent, high-quality learning, You Can Academy helps students gain the skills and confidence to break the cycle of poverty and build brighter futures.



92 KIDS ENROLLED
88 COMPLETED

95% YCA students pass to next grade.

87% of YCA students have GPA of 75 or above.

26% of YCA students improve their reading grade by the end of the year.

57% of YCA students who did not start the year at expected reading level improved by the end of the year.

Aside from showing improvement in their grades, parents reported their children having more confidence, improved social skills and the ability to make friends, learned about God and His place in their lives, improved eating habits, developed leadership skills, made homework a positive experience (not something to dread), becoming more independent, learned to focus and stay on task. One parent stated that because of the bicycle their child received from the program, they now go on family bike rides!

Adult Education

Attack Poverty's adult programs are designed to equip individuals with the skills and resources needed to thrive personally, professionally, and spiritually. Our offerings include GED Prep, Computer Literacy, Faith & Finances, Faith & Work, Healthy Bites, Healthy Moves, and English as a Second Language (ESL), each aimed at empowering participants to achieve their goals and improve their quality of life.



This class is the largest in the history of Attack Poverty and STCH Ministries, and the first time this class was offered at the Friends of Northside location.

150 ADULTS IN CLASSES 58 ADULTS IN WORKSHOPS

GED Prep
Computer Literacy
Faith & Finances
Faith & Work
Healthy Bites, Healthy Moves
English as a Second Language (ESL)

Revitalization

Attack Poverty's program for community revitalization plays a vital role in helping communities recover and rebuild after crises. In the face of natural disasters, economic setbacks, or other challenges, our team responds quickly to provide immediate assistance, such as food, water, and emergency supplies, to those in need.

We offer resources and support to rebuild infrastructure, restore local services, and strengthen neighborhood resilience. Beyond short-term relief, we focus on long-term community revitalization using an Asset-Based approach that builds on the strengths and capacities of the community.



7,598 IMPACTED
668 VOLUNTEERS
2,272 HOURS
\$72,568 VALUE

Home Repair
Community Revitalization Projects
Equip Community Members

Basic Needs

Attack Poverty defines basic needs as having access to clean water, food, shelter, safety, and health. Nearly half of the world lives on less than \$5.50 a day. 780 million people lack access to safe water. As many as 1.6 billion people world-wide lack adequate housing.

Through this missional component, we address critical needs such as food, shelter, clothing, and healthcare to ensure that no one in our community goes without the essentials for survival. By offering direct support in times of crisis, we help alleviate the strain on families, allowing them to focus on long-term stability and growth. Whether through food distributions, emergency housing assistance, or health services, Attack Poverty's Basic Needs Program plays a vital role in creating a foundation for hope and transformation in the lives of those we serve.



Through our partnership with Reliant, Convoy of Hope and Sugar Creek Baptist Church, we were able to facilitate two food and hurricane preparedness distributions serving over 600 families.

3,205 SERVED
303 VOLUNTEERS
25,545 HOURS
\$815,907 VALUE

Safe Water Projects
Food Distribution
Financial and Utility Assistance
Medical Clinics & Mental Health Resources
Disaster Recovery
Warming & Cooling Centers
Weekly Meals and Showers

International Partners



RUSHERE, UGANDA

Rushere Christian High School aims to transform generations through holistic, Christ-centered education with classes from S1, S2, S3 and S4. This year the high school enrolled 121 students and 100% passed their annual exams.

In November, severe flooding devastated the elementary school campus managed by our Rushere partner. With our support, they swiftly arranged temporary classrooms, allowing Mt. Olives Primary School to finish the year. By February 2024, they had successfully relocated the school to higher ground, enrolling over 200 students. The new site not only provided stability, but also increased parental confidence in the school's commitment to progress.



Bukomero, Uganda

BUKOMERO, UGANDA

Recovery Christian Academy Elementary School provides Nursery, Pre-K, K, P1, P2, P3, and P4 classes for 137 children. February was a month of celebration for our international partners. Since our primary focus in Uganda is on education and rural school development, the new school year begins in February. In Bukomero, our partner made a significant advancement by adding a Primary 4 class to the school. They mobilized local resources to build a temporary classroom for the growing number of Primary 3 students advancing from the previous year. This achievement marked a notable success in their ongoing efforts to support and expand educational opportunities.

HOUSE OF LOVE, INDIA

House of Love Orphanage is managed by Living Stone Ministry who provides children who are orphaned shelter, food, clothes, and education, leading them to holistic development. They aim to develop children who are strong in spirit and serve the Lord as He desires them to serve His kingdom. There is a total of 66 children (boys and girls and young adults), ages 6 to 21.



Many of the orphans cared for and raised at House of Love go on to university and begin professions in areas of service, such as education, medicine, nursing, and business.

SPECIAL ATTACK POVERTY PROJECT

In August, heavy rain collapsed the outdoor kitchen at House of Love, increasing cooking costs significantly. Construction on a new kitchen started in September, but faced delays and budget increases from \$4,000 to \$7,000 due to a site relocation. Attack Poverty and a church partner funded the project, completing the roof in January, and the kitchen opened in March, serving 66 children and 13 staff. Additionally, with support from Attack Poverty, our partner in India was able to pay 50% of staff salaries for the first time, recognizing their years of volunteer dedication to the 66 children.

Stories of Impact from Our Community

Emily & Maria

GED prep is designed to help adults (18 years of age and older) prepare to take the High School Equivalency test which covers four (4) subjects, Math, Science, Social Studies, and Reasoning through Language Arts.

Emily began her GED journey in January. Her goal was to complete the program in 6 months. She is a You Can Academy parent, and a single mom of 3, trying to juggle her GED studies. Lead volunteer, Ned Merchant was able to work out a schedule that would make it easy for her to come to class during You Can Academy, eliminating the need to make multiple trips. By April, Emily passed 3 of the 4 exams. Although she was on the fast track to complete her GED, she did not pass her last exam which would have had her finishing the program within her goal of 6 months. Emily was not discouraged. Instead she jumped back into studying so she will be ready to reassess in June. Emily is an inspiration to all who know her and has demonstrated that you can achieve your goals if you work hard, no matter your circumstances.

In November, we received amazing news from Maria, a previous student Ned worked with. She received her general equivalency degree (GED). Not only did Maria have to overcome being a single mother and having to work, but she also had to face the language barrier. Her first language is Spanish. She was able to work and communicate with Ned using a bilingual book that he resourced from an online source. Though the in-person classes between Ned and Maria paused, we kept in contact regarding her classes. We celebrated with Maria with a little breakfast. Her next step will be speaking with a counselor at Wharton County Junior College and getting enrolled for classes.

Dana & Imelda

Faith & Finances teaches that God's plan for your money might be larger than yours! Biblical principles about money come alive in this highly interactive course, as students are equipped to conquer the "battle of the budget." In this class students will discover how to make a spending plan that works, manage debt and loans, set savings goals, prepare for the future, and overcome past mistakes.

The Faith & Finances class at Northside experienced remarkable success with an overwhelming number of students and a record-breaking graduation of 23 participants! Many students returned after graduation, eagerly asking, "What's next?" They experienced significant growth in areas that quickly yield benefits, such as saving money and establishing healthy relationships with banks.

Additionally, many expressed interest in enrolling in our Microsoft and English classes. We heard inspiring stories from graduates like Dana Fuentes, who shared, "The Faith & Finances has helped me to learn how to manage my income intelligently with God's guidance." Another graduate, Imelda Martinez, expressed her gratitude: "Thank you for the opportunity and invitation to take this course. It was very important to me to put all this into practice in my life." This is truly what a successful program should look like—where individuals emerge empowered, knowledgeable, and envisioning a path to flourishing.



2025 Attack Poverty Gala

Save the Date
April 11, 2025

Safari Texas Ranch
Richmond, TX

Mission Week

192 ATTENDEES

168 VOLUNTEERS

1,052 HOURS

800 MEALS

24 CHURCHES

Mission Week, held each June, empowers individuals to tackle poverty locally, fostering community connections and personal growth. Each Attack Poverty location hosts events for residents, volunteers, and the broader community, helping participants build relationships and support community flourishing. This year, the Kid's Camp theme focused on the Armor of God, teaching children about spiritual protection, with a final skit to showcase their learning. Teens engaged in PuroPREP, a program focused on healthy relationships, while adults joined empowerment workshops, making Mission Week a transformative experience for all ages.



Mission
WEEK 2024
GO ON A MISSION TRIP IN YOUR OWN BACKYARD



“Mission week is integral to fulfilling our missional component of spiritual growth. By partnering with the local church through volunteers, we’re able to speak life into families during mission week, breaking the chains of spiritual poverty in the communities we serve.”

Nick Vann
Board Chair



Serve Days

523 VOLUNTEERS

1,830 HOURS

65% OF SERVE DAY
VOLUNTEERS WERE
CHURCH PARTNERS

Attack Poverty Serve Days occur quarterly across all Attack Poverty locations, bringing together hundreds of Houston-area volunteers for a powerful day of impact. Activities include home repairs, community revitalization projects, food distribution, prayer walks, and community listening sessions, welcoming volunteers from churches, corporations, and schools. Despite January's record cold, volunteers tackled projects like community and school gardens, food packing, prayer walks, and canvassing. With 523 volunteers serving 1,830 hours, Serve Days saw incredible participation, doubling turnout in April. Volunteers sorted and distributed food, cleaned streets, planted gardens, built rain barrel bases, created a Reading Garden, and organized books and games for our after school program, significantly contributing to community needs.



**SERVE
DAYS**
ATTACK POVERTY



“Serve Days were a new addition to our Community Engagement Strategy this year and involved hundreds of amazing volunteers from all over the city united to bring hope to the communities we serve.”

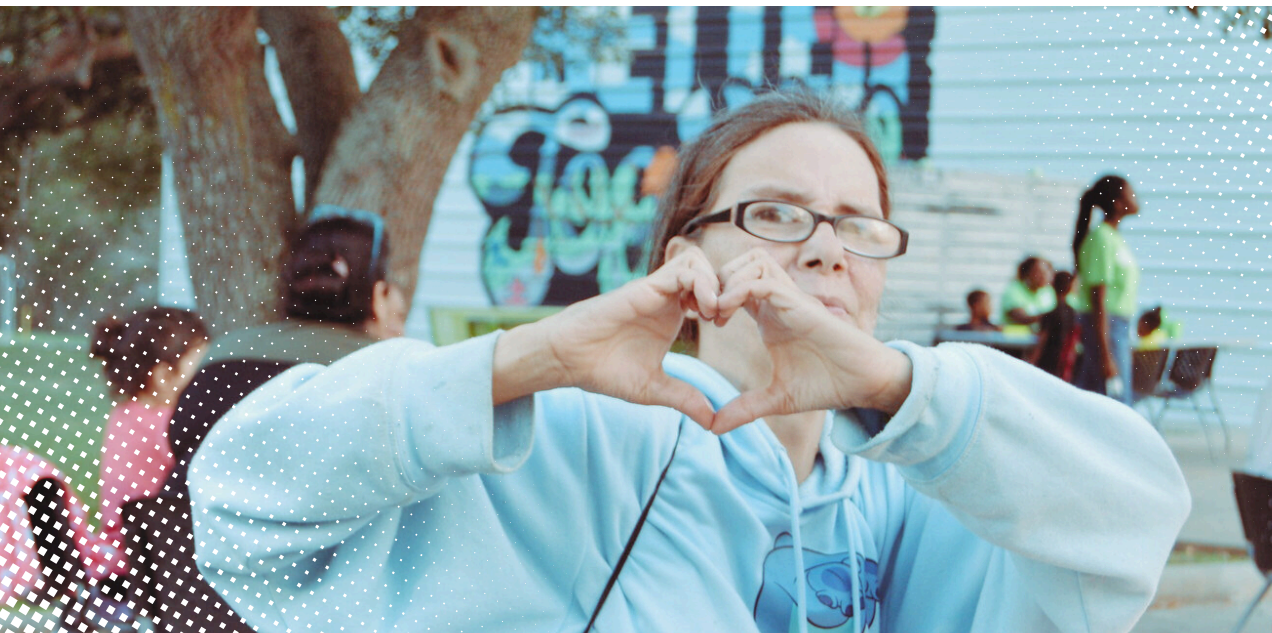
Ursula Wright
Senior Director of Human Resources



Volunteers

We appreciate the time and energy our volunteers give so selflessly. Through their service, they are making a difference in someone's life, so that voices are heard, individuals are empowered, and communities made whole.

1,669 VOLUNTEERS
39,072 HOURS
1,247,960 \$VALUE



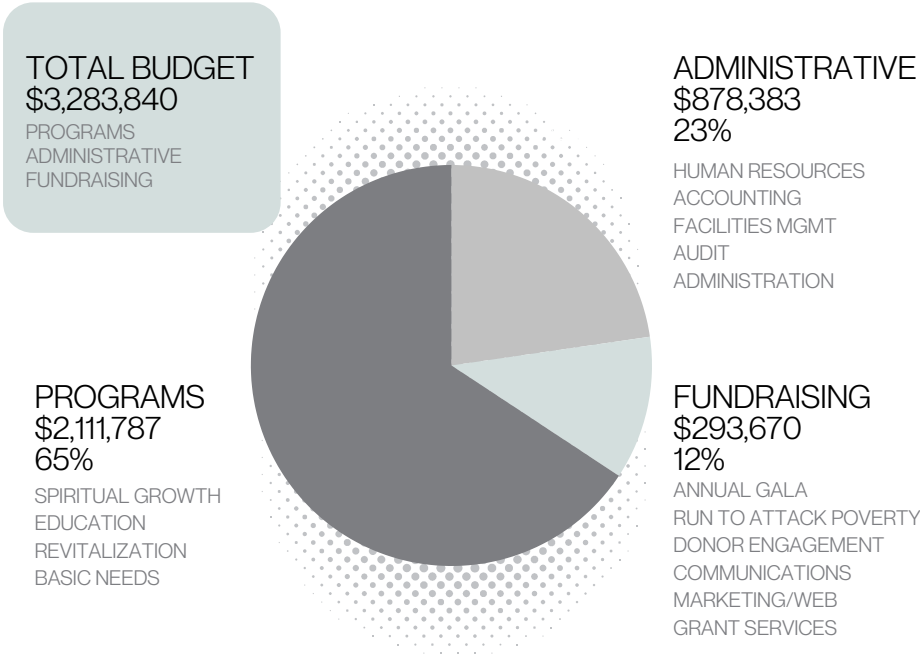
Without volunteers that show up and show the love of Christ to those we serve, we would not be able to advance the mission of Attack Poverty.

“I love it when I see our volunteers build relationships with community members. When volunteers take the time to listen and pray with residents, they create a safe space for voices to be heard and individuals to be empowered. This ultimately provides a foundation for the community to flourish!”

Rachel Snow
Director of Program Excellence

Financials 2023-2024

Our financials reflect the investments we've made in programs, services, and initiatives that help break the cycle of poverty. We invite you to review these figures, which demonstrate the impact of your support and our ongoing commitment to responsible, mission-driven financial management.



As of Jun 30, 2024 As of Jun 30, 2023 (PP) Change

ASSETS

Current Assets	\$ 365,428	\$ 2,928,924	-\$ 2,563,496
Total Bank Accounts	\$ 80,057	\$ 75,046	\$ 5,011
Total Accounts Receivable	\$ 60,489	\$ 125,786	-\$ 65,297
Total Other Current Assets	\$ 6,120,866	\$ 3,572,254	\$ 2,548,613
Total 1600 Fixed Assets	\$ 20,985	\$ 20,885	\$ 100
Total Other Assets	\$ 6,647,826	\$ 6,722,895	\$ 75,069

TOTAL ASSETS

LIABILITIES AND EQUITY

Liabilities

Current Liabilities

Total Accounts Payable	\$ 134,341	\$ 8,464	\$ 125,878.88
Total Credit Cards	\$ 99,326	\$ 43,858	\$ 55,468
Total Other Current Liabilities	\$ 682,846	\$ 3,010,297	-\$ 2,327,451
Total Long-Term Liabilities	\$ 859,324	\$ 864,389	-\$ 5,064
Total Liabilities	\$ 1,775,837	\$ 3,927,007	-\$ 2,151,171

Total Equity \$ 4,871,989 \$ 2,795,888 \$ 2,076,101

TOTAL LIABILITIES AND EQUITY \$ 6,647,826 \$ 6,722,895 -\$ 75,069

*All financial information above has yet to be audited
Attack Poverty is a registered 501(c)(3) nonprofit organization,
recognized by the Internal Revenue Service (IRS) as tax-exempt.
All contributions to Attack Poverty are tax-deductible.





Contact

PO BOX 63 Richmond, TX 77406

@attackpoverty

www.attackpoverty.org

@attackpoverty

